

PETIT ALBUM DES JEUNES FLÛTISTES

pour Flûte et Piano

Durée : ± 8'

arr. : Olivier GEOFFROY

1. LA CHÈVRE EN PARLEMENT (Chanson enfantine)

Musical score for 'LA CHÈVRE EN PARLEMENT' (Chanson enfantine). The score is written for Flûte and Piano. The Flûte part is in the treble clef, and the Piano part is in the grand staff (treble and bass clefs). The key signature is one sharp (F#) and the time signature is 4/4. The score consists of two systems of music. The first system shows the beginning of the piece, and the second system continues the melody and accompaniment. A large watermark 'E M O' is visible across the score.

etc.

2. GENTIL COQUELICOT

Musical score for 'GENTIL COQUELICOT'. The score is written for Flûte and Piano. The Flûte part is in the treble clef, and the Piano part is in the grand staff (treble and bass clefs). The key signature is one sharp (F#) and the time signature is 3/4. The score consists of two systems of music. The first system shows the beginning of the piece, and the second system continues the melody and accompaniment. A large watermark 'E M O' is visible across the score.

etc.

3. DANS SA MAISON, UN GRAND CERF

Flûte

Piano

The score for '3. DANS SA MAISON, UN GRAND CERF' is in 2/4 time with a key signature of one sharp (F#). The flute part consists of a series of eighth and quarter notes. The piano accompaniment features a steady bass line and chords in the right hand. A large, semi-transparent watermark 'D' is overlaid on the piano part.

etc.

4. SI VOUS SAVEZ BIEN DANSER

(Bourrée provençale)

Flûte

Piano

The score for '4. SI VOUS SAVEZ BIEN DANSER' is in 2/4 time with a key signature of one sharp (F#). The flute part has a rhythmic melody with some grace notes. The piano accompaniment is characterized by frequent rests in the right hand and a consistent bass line. A large, semi-transparent watermark 'E' is overlaid on the piano part.

etc.

5. BONJOUR, MA COUSINE

Flûte

Piano

The score for '5. BONJOUR, MA COUSINE' is in 2/4 time with a key signature of one sharp (F#). The flute part features a melodic line with some slurs. The piano accompaniment includes a steady bass line and chords. A large, semi-transparent watermark 'M' is overlaid on the piano part. At the bottom left of the piano part, the number '6' is written.

etc.

6. SI LE ROI M'AVAIT DONNÉ...

Flûte

Piano

etc.

Detailed description: This block contains the musical score for the first piece. It features a Flûte (flute) part on a single staff and a Piano accompaniment on two staves (treble and bass clef). The key signature is one sharp (F#) and the time signature is 2/4. A large, semi-transparent letter 'D' is overlaid on the piano part. The music consists of five measures, ending with a fermata and the word 'etc.'.

7. À LA VOLETTE

Flûte

Piano

etc.

E Detailed description: This block contains the musical score for the second piece. It features a Flûte (flute) part on a single staff and a Piano accompaniment on two staves (treble and bass clef). The key signature is one sharp (F#) and the time signature is 2/4. A large, semi-transparent letter 'E' is overlaid on the piano part. The music consists of five measures, ending with a fermata and the word 'etc.'.

8. AH MON BEAU CHÂTEAU

Flûte

Piano

etc.

M O Detailed description: This block contains the musical score for the third piece. It features a Flûte (flute) part on a single staff and a Piano accompaniment on two staves (treble and bass clef). The key signature is one sharp (F#) and the time signature is 2/4. A large, semi-transparent letter 'M' is overlaid on the piano part, and a large, semi-transparent letter 'O' is overlaid on the piano part in the lower section. The music consists of five measures, ending with a fermata and the word 'etc.'.

9. IL ÉTAIT UNE DAME TARTINE

Flûte

Piano

The score for 'Il était une dame tartine' features a flute part in the upper staff and a piano accompaniment in the lower staves. The music is in 6/8 time with a key signature of one sharp (F#). The piano part includes a large, semi-transparent watermark 'D' on the left side.

etc.

10. IL ÉTAIT UNE BERGÈRE

Flûte

Piano

The score for 'Il était une bergère' features a flute part in the upper staff and a piano accompaniment in the lower staves. The music is in 6/8 time with a key signature of two flats (Bb, Eb). The piano part includes a large, semi-transparent watermark 'E' in the center.

etc.

11. LE BON ROI DAGOBERT

Flûte

Piano

The score for 'Le bon roi Dagobert' features a flute part in the upper staff and a piano accompaniment in the lower staves. The music is in 6/8 time with a key signature of one sharp (F#). The piano part includes a large, semi-transparent watermark 'M' in the center.

This block shows the continuation of the piano accompaniment for 'Le bon roi Dagobert'. It includes the right and left hand parts of the piano. A large, semi-transparent watermark 'O' is visible on the right side.

etc.

PETIT ALBUM DES JEUNES FLÛTISTES

pour Flûte et Piano

Flûte

arr. : Olivier GEOFFROY

D

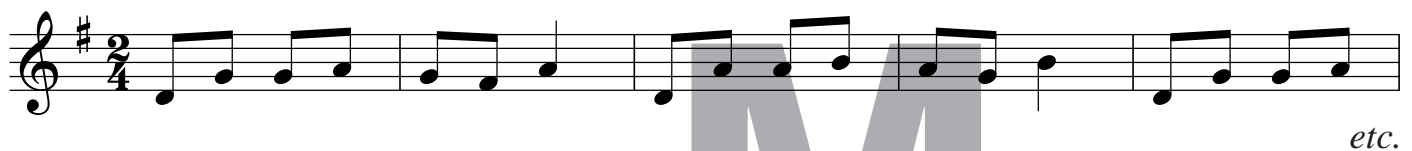
1. LA CHÈVRE EN PARLEMENT (Chanson enfantine)



2. GENTIL COQUELICOT



3. DANS SA MAISON, UN GRAND CERF



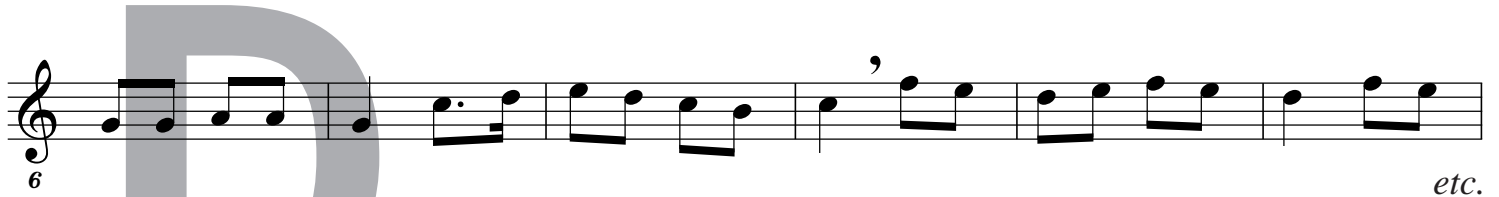
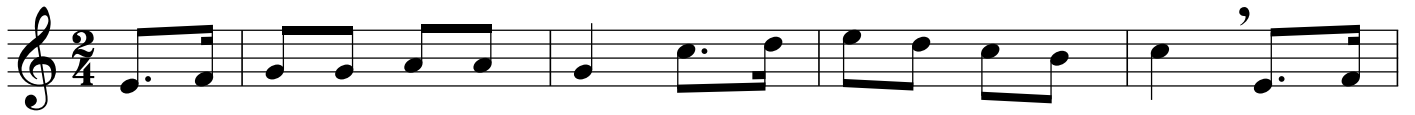
4. SI VOUS SAVEZ BIEN DANSER



5. BONJOUR, MA COUSINE



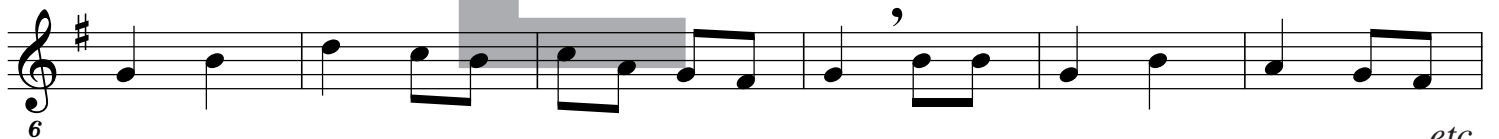
6. SI LE ROI M'AVAIT DONNÉ...

*etc.*

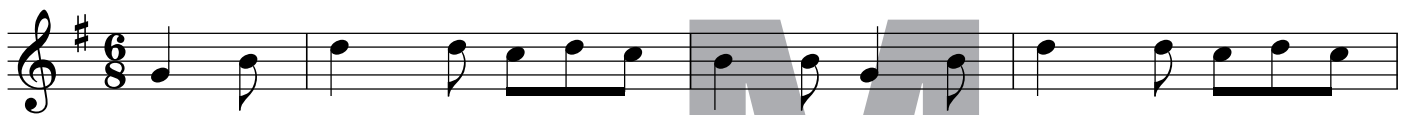
7. À LA VOLETTE

*etc.*

8. AH ! MON BEAU CHÂTEAU

*etc.*

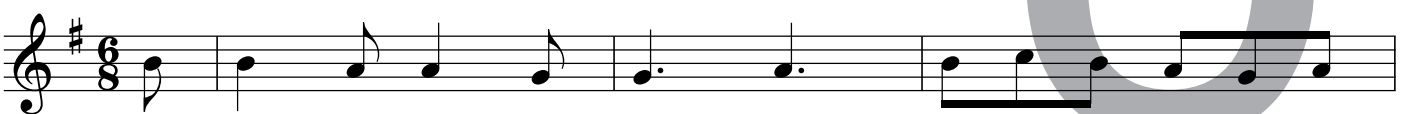
9. IL ÉTAIT UNE DAME TARTINE

*etc.*

10. IL ÉTAIT UNE BERGÈRE

*etc.*

11. LE BON ROI DAGOBERT

*etc.*