

JE JOUE AU VIOLON LES CHANSONS POUR LES PETITS

pour Violon et Piano

Olivier GEOFFROY

1. AU CLAIR DE LA LUNE

Musical score for 'AU CLAIR DE LA LUNE' for Violon and Piano. The score is in G major (one sharp) and 2/4 time. The Violon part consists of a simple melody. The Piano part provides harmonic accompaniment with chords and moving lines in both hands. A large watermark 'D' is visible on the left side of the page.

etc.

2. FAIS DODO, COLAS

Musical score for 'FAIS DODO, COLAS' for Violon and Piano. The score is in G major (one sharp) and 3/4 time. The Violon part features a melody with some rests. The Piano part has a more complex accompaniment with chords and moving lines. A large watermark 'M' is visible in the center of the page.

etc.

3. PETIT JEAN

Musical score for 'PETIT JEAN' for Violon and Piano. The score is in G major (one sharp) and 2/4 time. The Violon part has a melody with some rests. The Piano part provides accompaniment with chords and moving lines. A large watermark 'O' is visible on the right side of the page.

etc.

4. MELCHIOR & BALTHAZAR

Violon

Piano

etc.

Detailed description: This block contains the musical score for the first piece, '4. MELCHIOR & BALTHAZAR'. It features a Violon part on a single staff and a Piano part on a grand staff (treble and bass clefs). The key signature is one sharp (F#) and the time signature is 2/4. The music consists of four measures. A large, semi-transparent watermark 'D' is overlaid on the piano part. The piece concludes with the text 'etc.'.

5. C'EST LA MÈRE MICHEL

Violon

Piano

E

Detailed description: This block contains the musical score for the second piece, '5. C'EST LA MÈRE MICHEL'. It features a Violon part on a single staff and a Piano part on a grand staff. The key signature is one sharp (F#) and the time signature is 2/4. The music consists of five measures. A large, semi-transparent watermark 'E' is overlaid on the piano part. The piece concludes with the text 'etc.'.

M

5

etc.

Detailed description: This block contains the continuation of the musical score for '5. C'EST LA MÈRE MICHEL'. It features a Violon part on a single staff and a Piano part on a grand staff. The key signature is one sharp (F#) and the time signature is 2/4. The music consists of five measures, starting with a measure number '5' in the bottom left. A large, semi-transparent watermark 'M' is overlaid on the piano part. The piece concludes with the text 'etc.'.

6. CARILLON DE VENDÔME

Violon

Piano

O

etc.

Detailed description: This block contains the musical score for the third piece, '6. CARILLON DE VENDÔME'. It features a Violon part on a single staff and a Piano part on a grand staff. The key signature is one sharp (F#) and the time signature is 2/4. The music consists of seven measures. A large, semi-transparent watermark 'O' is overlaid on the piano part. The piece concludes with the text 'etc.'.

7. AUX MARCHES DU PALAIS

Violon

Piano

etc.

Detailed description: This musical score is for the piece 'AUX MARCHES DU PALAIS'. It features a Violon (Violin) part and a Piano part. The key signature is one sharp (F#) and the time signature is 6/8. The Violon part consists of a single melodic line. The Piano part is written in a grand staff with treble and bass clefs, providing harmonic accompaniment. A large, semi-transparent watermark 'D' is overlaid on the left side of the piano part. The score concludes with the word 'etc.'.

8. CADET ROUSSELLE

Violon

Piano

etc.

E

Detailed description: This musical score is for the piece 'CADET ROUSSELLE'. It features a Violon (Violin) part and a Piano part. The key signature is one sharp (F#) and the time signature is 6/8. The Violon part consists of a single melodic line. The Piano part is written in a grand staff with treble and bass clefs, providing harmonic accompaniment. A large, semi-transparent watermark 'E' is overlaid on the piano part. The score concludes with the word 'etc.'.

9. SE CANTO

Violon

Piano

etc.

M

Detailed description: This musical score is for the piece 'SE CANTO'. It features a Violon (Violin) part and a Piano part. The key signature is one sharp (F#) and the time signature is 3/4. The Violon part consists of a single melodic line. The Piano part is written in a grand staff with treble and bass clefs, providing harmonic accompaniment. A large, semi-transparent watermark 'M' is overlaid on the piano part. The score concludes with the word 'etc.'.

10. QUAND TROIS POULES VONT AUX CHAMPS

Violon

Piano

FIN

etc.

O

Detailed description: This musical score is for the piece 'QUAND TROIS POULES VONT AUX CHAMPS'. It features a Violon (Violin) part and a Piano part. The key signature is one sharp (F#) and the time signature is 2/4. The Violon part includes a repeat sign and ends with the word 'FIN'. The Piano part also includes a repeat sign and ends with the word 'FIN'. A large, semi-transparent watermark 'O' is overlaid on the piano part. The score concludes with the word 'etc.'.

11. MICHAEL ROW THE BOAT ASHORE

Violon

Piano

etc.

Detailed description: This block contains the musical score for 'Michael Row the Boat Ashore'. It features a Violon part on a single staff and a Piano part on two staves (treble and bass clef). The key signature is one sharp (F#) and the time signature is 4/4. The music consists of a simple melody in the Violon and a supporting accompaniment in the Piano. A large, semi-transparent watermark 'D' is overlaid on the left side of the piano part.

12. J'AI DU BON TABAC

Violon

Piano

etc.

E Detailed description: This block contains the musical score for 'J'ai du bon tabac'. It features a Violon part on a single staff and a Piano part on two staves (treble and bass clef). The key signature is one sharp (F#) and the time signature is 2/4. The music consists of a simple melody in the Violon and a supporting accompaniment in the Piano. A large, semi-transparent watermark 'E' is overlaid on the piano part.

13. DO, RÉ, MI, LA PERDRIX

Violon

Piano

etc.

M Detailed description: This block contains the musical score for 'Do, Ré, Mi, La Perdrix'. It features a Violon part on a single staff and a Piano part on two staves (treble and bass clef). The key signature is one sharp (F#) and the time signature is 2/4. The music consists of a simple melody in the Violon and a supporting accompaniment in the Piano. A large, semi-transparent watermark 'M' is overlaid on the piano part.

14. LUNDI MATIN

Violon

Piano

etc.

O Detailed description: This block contains the musical score for 'Lundi matin'. It features a Violon part on a single staff and a Piano part on two staves (treble and bass clef). The key signature is one sharp (F#) and the time signature is 2/4. The music consists of a simple melody in the Violon and a supporting accompaniment in the Piano. A large, semi-transparent watermark 'O' is overlaid on the piano part.

15. WHEN THE SAINTS

Violon

Piano

etc.

Detailed description: This musical score is for the hymn 'When the Saints'. It features a Violin part and a Piano accompaniment. The key signature is one sharp (F#) and the time signature is 4/4. The Violin part begins with a quarter note G4, followed by quarter notes A4, B4, and C5, then a half note G4-A4, and continues with quarter notes B4, C5, B4, A4, G4, and F#4. The Piano part has a treble and bass clef. The treble clef part starts with a quarter note G4, followed by quarter notes A4, B4, and C5, then a half note G4-A4, and continues with quarter notes B4, C5, B4, A4, G4, and F#4. The bass clef part starts with a quarter rest, followed by quarter notes G3, A3, B3, and C4, then a half note G3-A3, and continues with quarter notes B3, C4, B3, A3, G3, and F#3. A large grey watermark 'D' is visible on the left side of the piano part.

16. IL ÉTAIT UN PETIT HOMME

Violon

Piano

etc.

E

Detailed description: This musical score is for the French hymn 'Il était un petit homme'. It features a Violin part and a Piano accompaniment. The key signature is one sharp (F#) and the time signature is 3/4. The Violin part begins with a quarter note G4, followed by quarter notes A4, B4, and C5, then a half note G4-A4, and continues with quarter notes B4, C5, B4, A4, G4, and F#4. The Piano part has a treble and bass clef. The treble clef part starts with a quarter note G4, followed by quarter notes A4, B4, and C5, then a half note G4-A4, and continues with quarter notes B4, C5, B4, A4, G4, and F#4. The bass clef part starts with a quarter rest, followed by quarter notes G3, A3, B3, and C4, then a half note G3-A3, and continues with quarter notes B3, C4, B3, A3, G3, and F#3. A large grey watermark 'E' is visible in the center of the piano part.

17. COMPAGNONS DE LA MARJOLAINE

Violon

Piano

etc.

M

Detailed description: This musical score is for the French hymn 'Compagnons de la Marjolaine'. It features a Violin part and a Piano accompaniment. The key signature is one sharp (F#) and the time signature is 6/8. The Violin part begins with a quarter note G4, followed by quarter notes A4, B4, and C5, then a half note G4-A4, and continues with quarter notes B4, C5, B4, A4, G4, and F#4. The Piano part has a treble and bass clef. The treble clef part starts with a quarter note G4, followed by quarter notes A4, B4, and C5, then a half note G4-A4, and continues with quarter notes B4, C5, B4, A4, G4, and F#4. The bass clef part starts with a quarter rest, followed by quarter notes G3, A3, B3, and C4, then a half note G3-A3, and continues with quarter notes B3, C4, B3, A3, G3, and F#3. A large grey watermark 'M' is visible in the center of the piano part.

18. OYEZ, BERGERS

Violon

Piano

etc.

O

Detailed description: This musical score is for the French hymn 'Oyez, bergers'. It features a Violin part and a Piano accompaniment. The key signature is one sharp (F#) and the time signature is 2/4. The Violin part begins with a quarter note G4, followed by quarter notes A4, B4, and C5, then a half note G4-A4, and continues with quarter notes B4, C5, B4, A4, G4, and F#4. The Piano part has a treble and bass clef. The treble clef part starts with a quarter note G4, followed by quarter notes A4, B4, and C5, then a half note G4-A4, and continues with quarter notes B4, C5, B4, A4, G4, and F#4. The bass clef part starts with a quarter note G3, followed by quarter notes A3, B3, and C4, then a half note G3-A3, and continues with quarter notes B3, C4, B3, A3, G3, and F#3. A large grey watermark 'O' is visible on the right side of the piano part.

JE JOUE AU VIOLON LES CHANSONS POUR LES PETITS

pour Violon et Piano

Olivier GEOFFROY

D

1. AU CLAIR DE LA LUNE

Musical score for 'AU CLAIR DE LA LUNE' in G major, 2/4 time. It consists of three staves of music. The first staff starts with a treble clef, a key signature of one sharp (F#), and a 2/4 time signature. The second staff begins with a measure rest labeled '6'. The third staff begins with a measure rest labeled '11'. A large watermark 'E' is visible in the background.

2. FAIS DODO, COLAS

Musical score for 'FAIS DODO, COLAS' in G major, 3/4 time. It consists of two staves of music. The first staff starts with a treble clef, a key signature of one sharp (F#), and a 3/4 time signature. The second staff begins with a measure rest labeled '8'. The piece concludes with a double bar line and the word 'FIN'. A first ending (1.) and a second ending (2.) are indicated with repeat signs and a section symbol (§). A large watermark 'M' is visible in the background.

3. PETIT JEAN

Musical score for 'PETIT JEAN' in G major, 2/4 time. It consists of two staves of music. The first staff starts with a treble clef, a key signature of one sharp (F#), and a 2/4 time signature. The second staff begins with a measure rest labeled '7'. The piece concludes with a double bar line and the word 'FIN'. A section symbol (§) is at the end. A large watermark 'O' is visible in the background.

4. MELCHIOR & BALTHAZAR

Musical score for 'MELCHIOR & BALTHAZAR' in G major, 2/4 time. It consists of two staves of music. The first staff starts with a treble clef, a key signature of one sharp (F#), and a 2/4 time signature. The second staff begins with a measure rest labeled '5'.

5. C'EST LA MÈRE MICHEL

Musical score for 'C'EST LA MÈRE MICHEL' in G major (one sharp) and 2/4 time. The score consists of four staves of music. A large grey letter 'D' is overlaid on the first two staves. Measure numbers 7, 13, and 19 are indicated at the beginning of the second, third, and fourth staves respectively.

6. CARILLON DE VENDÔME

Musical score for 'CARILLON DE VENDÔME' in G major (one sharp) and 2/4 time. The score consists of one staff of music. A large grey letter 'E' is overlaid on the staff.

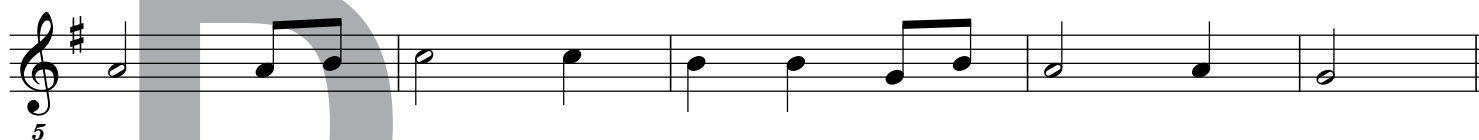
7. AUX MARCHES DU PALAIS

Musical score for 'AUX MARCHES DU PALAIS' in G major (one sharp) and 6/8 time. The score consists of two staves of music. A large grey letter 'M' is overlaid on the second staff. Measure number 6 is indicated at the beginning of the first staff.

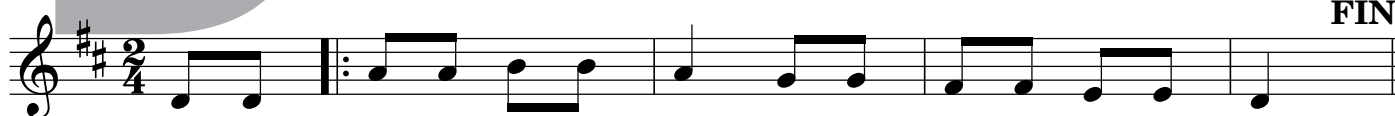
8. CADET ROUSSELLE

Musical score for 'CADET ROUSSELLE' in G major (one sharp) and 6/8 time. The score consists of three staves of music. A large grey letter 'O' is overlaid on the second staff. Measure numbers 5, 9, and 13 are indicated at the beginning of the first, second, and third staves respectively.

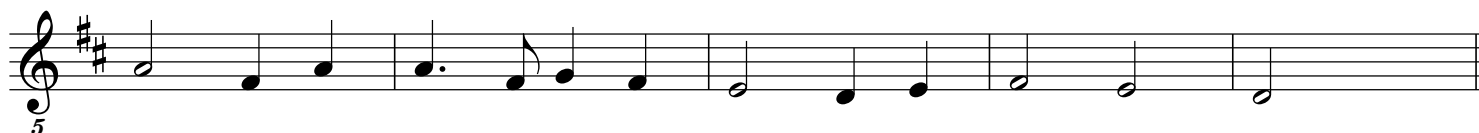
9. SE CANTO



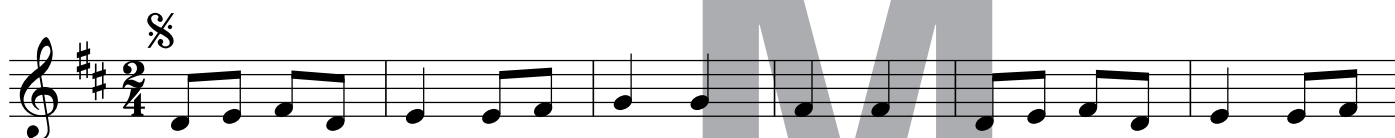
10. QUAND TROIS POULES VONT AUX CHAMPS



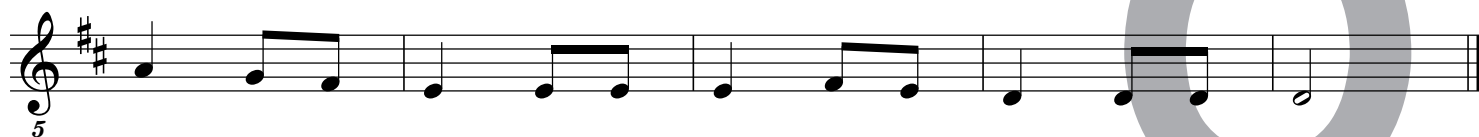
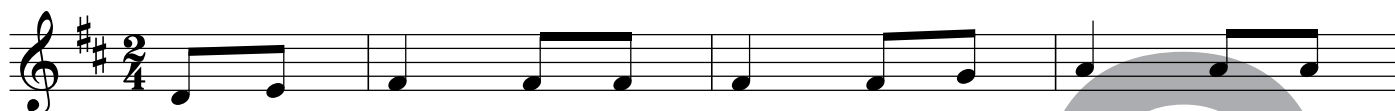
11. MICHAEL ROW THE BOAT ASHORE



12. J'AI DU BON TABAC

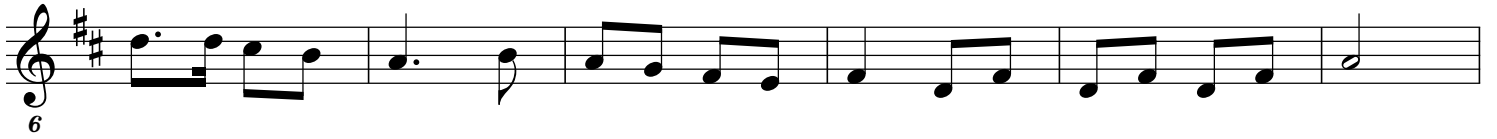


13. DO, RÉ, MI, LA PERDRIX



14. LUNDI MATIN



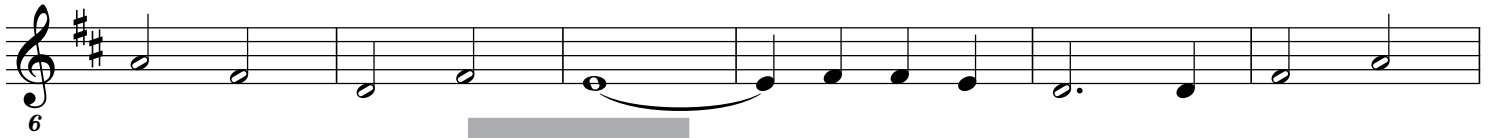


6

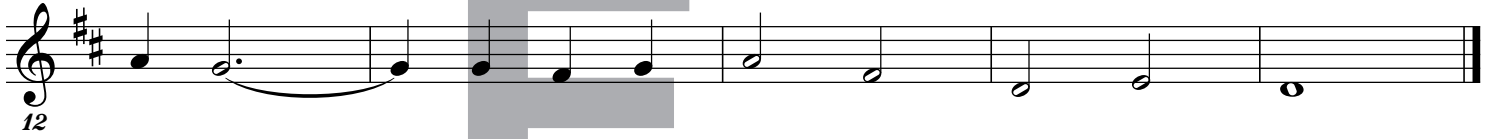


12

15. WHEN THE SAINTS

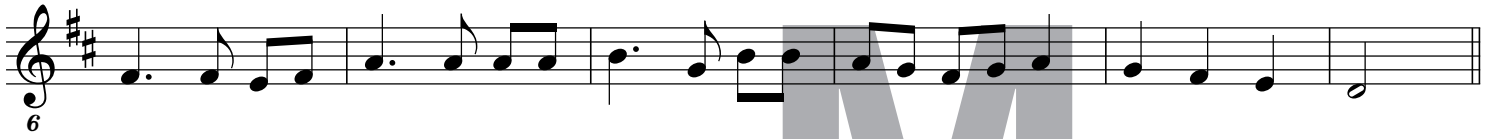


6



12

16. IL ÉTAIT UN PETIT HOMME



6

17. COMPAGNONS DE LA MARJOLAINE



5

18. OYEZ, BERGERS



7