

AVANT-PROPOS

pour Guitare

André RULENS

D

EXERCICES PRÉPARATOIRES

1

m i m i m i m i m i

2

m i m i m i

mi fa sol

E

3

m i m i m i m i m i

4

m i m i m i

la si do

M

5

m i

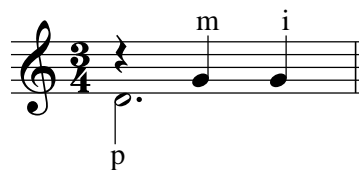
6

2 3

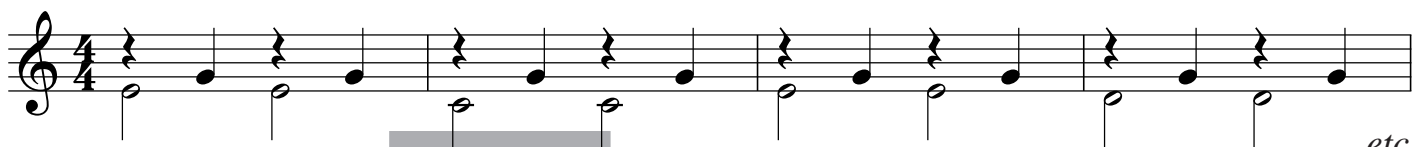
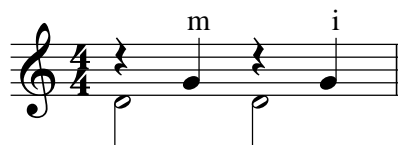
7

O

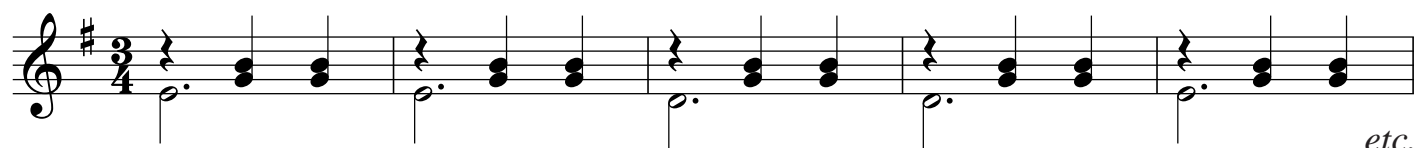
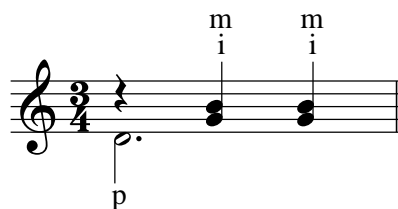
AVANT-PROPOS n° 1



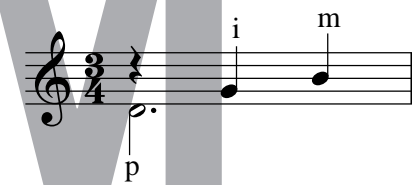
AVANT-PROPOS n° 2



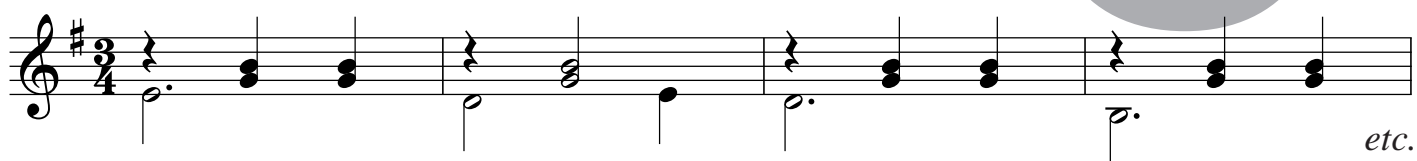
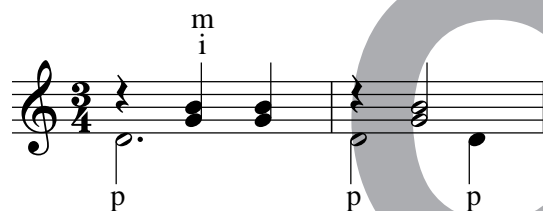
AVANT-PROPOS n° 3



AVANT-PROPOS n° 5



AVANT-PROPOS n° 7



AVANT-PROPOS n° 9

Musical notation for the first part of Avant-Propos n° 9, featuring a treble clef, 4/4 time signature, and notes with fingerings 'i' and 'm'. The notes are quarter notes on a single staff.

Musical notation for the second part of Avant-Propos n° 9, consisting of two staves of music. A large grey letter 'D' is overlaid on the first staff.

etc.

AVANT-PROPOS n° 10

Musical notation for the first part of Avant-Propos n° 10, featuring a treble clef, 3/4 time signature, and notes with fingerings 'i' and 'm'. The notes are quarter notes on a single staff.

Musical notation for the second part of Avant-Propos n° 10, consisting of two staves of music. A large grey letter 'E' is overlaid on the first staff.

etc.

AVANT-PROPOS n° 12

Musical notation for the first part of Avant-Propos n° 12, featuring a treble clef, 2/4 time signature, and notes with fingerings 'm' and 'i'. The notes are quarter notes on a single staff.

Musical notation for the second part of Avant-Propos n° 12, consisting of two staves of music. A large grey letter 'M' is overlaid on the first staff.

etc.

AVANT-PROPOS n° 15

Musical notation for the first part of Avant-Propos n° 15, consisting of two staves of music. A large grey letter 'O' is overlaid on the first staff.

Musical notation for the second part of Avant-Propos n° 15, consisting of two staves of music.

etc.

AVANT-PROPOS n° 16

Two staves of music in 3/4 time. The first staff begins with a large grey letter 'D' overlaid. The music consists of a series of chords, each starting with a quarter rest followed by a dotted half note. The second staff continues the sequence and ends with the text "etc."

AVANT-PROPOS n° 17

Three staves of music in 3/4 time. A large grey letter 'E' is overlaid on the first two staves. The music consists of a series of chords, each starting with a quarter rest followed by a dotted half note. The third staff continues the sequence and ends with the text "etc."

AVANT-PROPOS n° 18

Four staves of music in 3/4 time. A large grey letter 'M' is overlaid on the first two staves. The first staff includes the lyrics "a mi mi" above the notes. A large grey letter 'O' is overlaid on the third staff. The music consists of a series of chords, each starting with a quarter rest followed by a dotted half note. The fourth staff continues the sequence and ends with the text "etc."

AVANT-PROPOS n° 19

i m
p
p
i m
3
2

etc.

PETITE VALSE

2
1

etc.